



see. change. **enjoy vision.**



Get the best of both worlds—
crisp, clear vision of a rigid lens
all-day **comfort** of a soft lens

synerg**eyes**[®]

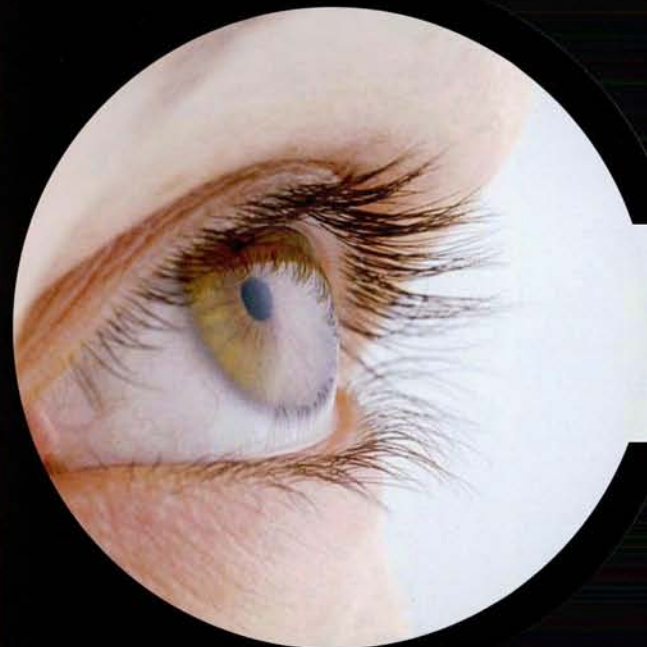
www.synergeyes.com

Ask your eye care
professional **today:**
Now is the time to upgrade your vision with
SynergEyes[®]! Ask your eye care professional
if SynergEyes[®] is right for you.



ADVANCED
EYE CARE & SURGERY

501 E. Palm Valley Blvd.
Round Rock, Texas 78664
(512) 248-2424
www.eyecare-surgery.com



www.synergeyes.com

©2006 SynergEyes, Inc.

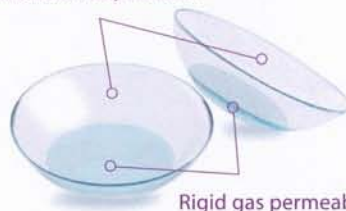
75001 Rev. C



Remember when you had only two choices in contact lenses? "Hard" (rigid gas permeable) lenses were best for crisp, clear vision, but were often irritating and uncomfortable. Soft lenses were the most comfortable, but often provided less-than-optimal vision. Now, a technological breakthrough makes having to choose a thing of the past.

SynergEyes® Hybrid Contact Lenses – The Best of Both Worlds

Soft skirt for all-day comfort



Rigid gas permeable center for crisp high-definition vision

The "breathable" rigid center keeps eyes healthy while providing crisp, clear vision...even at night. The outer skirt gives you the all-day comfort of a soft lens.

Why Not Optimize Your Vision?

No matter what type of vision correction you currently use, there's a good chance you're compromising on either clarity or comfort. With SynergEyes® there are no compromises.

• Do you wear soft contact lenses?

If yes, you may be settling for less-than-optimal vision. Thanks to the rigid center optics of SynergEyes®, you can enjoy high-definition vision as never before.

• Do you have astigmatism?

SynergEyes® is free from "toric lens rotation," a common problem associated with soft toric lenses that causes inconsistent vision. SynergEyes® optics remain stable, delivering consistently clear vision – blink after blink.

• Do you wear "hard" contact lenses?

If yes, you may be settling for less-than-optimal comfort. SynergEyes® eliminates the problem of irritating debris that can collect under conventional rigid lenses. And you won't experience the annoyance of rigid lenses moving when you blink, or dislodging with your active lifestyle.



• Do you still wear glasses?

If yes, you may have had a disappointing experience with contact lenses in the past. The hybrid design eliminates many problems people have had with contact lenses.



SynergEyes® may very well be the contact lens breakthrough for your active lifestyle.

Which SynergEyes® Lens Is Right for You?

SynergEyes® A:

The SynergEyes® A lens is the perfect choice if you are **hyperopic, myopic, astigmatic, and/or presbyopic.**

SynergEyes® KC:

The perfect solution if you have **keratoconus**, the custom-made SynergEyes® KC lens offers unmatched stability while enhancing your level of comfort and visual acuity.

see. change. enjoy vision.™

Recommended replacement: every six months or more frequently as prescribed by your eye care professional.